



Mahidol University
Institute for Population
and Social Research

International Ph. D. Program in

APPLIED ”

DEMOGRAPHY

AND SOCIAL RESEARCH

“

Ph.D. Committee and Contact



Assoc. Prof. Dr. Bhubate Samutachak
Programme Chair, Email: bhubate.sam@mahidol.ac.th



Assoc. Prof. Dr. Sureeporn Punpuing
Email: sureeporn.pun@mahidol.edu



Prof. Dr. Patama Vapattanawong
Email: patama.vap@mahidol.ac.th



Assoc. Prof. Dr. Sudarat Musikawong
Email: sudarat.mus@mahidol.edu



Asst. Prof. Dr. Sakkarin Niyomsilpa
Email: sakkarin.niy@mahidol.ac.th



Dr. Dyah Anantalia Widyastari
Email: dyah.ana@mahidol.edu



Asst. Prof. Dr. Marc Voelker
Programme Secretary,
Email: marc.voe@mahidol.edu

**Doctor of Philosophy Programme in
Applied Demography and Social Research
(International Programme)
Revised in 2023**

~~~~~

**1. Programme Title**

Doctor of Philosophy Programme in Applied Demography and  
Social Research (International Programme)

**2. Name of Degree**

|              |                                                               |
|--------------|---------------------------------------------------------------|
| Full name    | Doctor of Philosophy (Applied Demography and Social Research) |
| Abbreviation | Ph.D. (Applied Demography and Social Research)                |

**3. Responsible Unit**

- 3.1 Institute for Population and Social Research, Mahidol University.
- 3.2 Faculty of Graduate Studies, Mahidol University.

**4. Philosophy, Objectives and Program Learning Outcomes of the Programme**

**4.1 Philosophy**

A leading international program that produces graduates with expertise in applied demographic and social research and synthesis, professional ethics and advanced skills in analysis and policy communication.

**4.2 Objective**

The most important objectives of this programme are:

- 4.2.1 to produce high quality graduates with excellent technical knowledge and research and communication skills who can meet the needs of various governmental and non-governmental organizations;
- 4.2.2 to produce graduates who can effectively carry out research, teaching and planning in the process of development at different levels. They are also trained to be good practitioners with acceptable moral standard.

**4.3 Program Learning Outcomes (PLOs)**

- 4.3.1 Apply demography and social science theories and techniques, in order to evaluate and analyze (current situations) of (issues in) population and society.
- 4.3.2 Design and implement research projects independently with high ethical standards and professional integrity.
- 4.3.3 Demonstrate analytical, problem-solving skills, and critical thinking.
- 4.3.4 Demonstrate creativity, leadership and communication skills.

**5. Programme Curriculum**

The Programme consists of two plans with different requirements: Plan 1 and Plan 2. Applicants are advised to select either Plan 1 or 2 to suit their interest and background.

- Plan 1 emphasizes research. Students are required to successfully pass qualifying examination and complete dissertation research, but are not required to earn course-credits. However, students may take courses of their interests; or they may be advised to take courses that are relevant to or needed for their research. Credits from those courses are not required for graduation.
- Plan 2 requires that students earn at least a minimum requirement of course-credits, successfully pass qualifying examination, and complete the dissertation.

**5.1 Number of credits required for the programme:** To pursue doctoral degree in this programme, students are required to complete the following number of credits depending on their backgrounds.

- Plan 1 students must complete 48 credits of dissertation.
- Plan 2 students holding a Master's degree with adequate basic knowledge in demography/population studies must complete at least 48 credits.

Study plan for all students for academic year 2023

**Plan 2.1 Student without background**

|                                     | <b>Semester 1</b><br><b>August-December</b>                                                                                                          | <b>Semester 2</b><br><b>January-April</b>                                                                                                                                           |
|-------------------------------------|------------------------------------------------------------------------------------------------------------------------------------------------------|-------------------------------------------------------------------------------------------------------------------------------------------------------------------------------------|
| <b>Year 1</b><br><b>2023- 2024</b>  | PRPS 550 Substantive Demography 3 cr.<br><br>PRPS 555 Analytical Techniques in Demography 3 cr.<br><br>PRDS 703 Social Theories for Demography 3 cr. | PRDS 669 Seminar in Applied Demography and Social Research 3 cr.<br><br>PRDS 684 Advanced Social Research Methodology 3 cr.<br><br>PRDS 702 Demographic Materials and Methods 3 cr. |
| <b>Year 2</b><br><b>2024 - 2025</b> | Qualifying examination                                                                                                                               | Qualifying examination<br><br>PRDS 699 Dissertation 36 cr.                                                                                                                          |
| <b>Year 3</b><br><b>2025 - 2026</b> | PRDS 699 Dissertation 36 cr.                                                                                                                         | PRDS 699 Dissertation 36 cr.                                                                                                                                                        |

## Required Courses

Students who have no or inadequate background in demography/population studies must complete some or all PRPS required courses, depending on their background, before taking PRDS required courses. These courses are offered in the Master's Degree Program in Population and Sexual and Reproductive Health

|          |                                     | <b>Credits</b> |
|----------|-------------------------------------|----------------|
| PRPS 550 | Substantive Demography              | 3 (3-0-6)      |
| PRPS 555 | Analytical Techniques in Demography | 3 (3-2-5)      |
| PRPS 565 | Statistics for Social Analysis      | 3 (3-0-6)      |
| PRPS 566 | Social Research Methodology         | 3 (3-0-6)      |

The following required courses are for students with adequate background in demography/population studies:

|          |                                                   | <b>Credits</b> |
|----------|---------------------------------------------------|----------------|
| PRDS 669 | Seminar in Applied Demography and Social Research | 3 (3-0-6)      |
| PRDS 684 | Advanced Social Research Methodology              | 3 (3-0-6)      |
| PRDS 702 | Demographic Materials and Methods                 | 3 (3-0-6)      |

## Elective Courses

|          |                                                                   | <b>Credits</b> |
|----------|-------------------------------------------------------------------|----------------|
| PRDS 664 | Family Demography                                                 | 3 (3-0-6)      |
| PRDS 667 | Demographic Epidemiology                                          | 3 (3-0-6)      |
| PRDS 678 | Geographical Information System and Social Science Research       | 3 (3-0-6)      |
| PRDS 680 | Qualitative Research Methodology                                  | 3 (2-2-5)      |
| PRDS 686 | Mortality and Morbidity                                           | 3 (3-0-6)      |
| PRDS 689 | Economic Demography                                               | 3 (3-0-6)      |
| PRDS 690 | Population and Social Determinants of Health                      | 3 (3-0-6)      |
| PRDS 691 | Business Demography                                               | 3 (3-0-6)      |
| PRDS 693 | Applied Multivariate Analysis for Demographic and Social Research | 3 (3-0-6)      |
| PRDS 694 | Applied Regression Modeling for Panel Data Analysis               | 3 (3-0-6)      |
| PRDS 703 | Social Theories for Demography                                    | 3 (3-0-6)      |
| PRDS 704 | Global Population Aging in the Twenty-First Century               | 3 (3-0-6)      |
| PRDS 705 | Sociodemographic Spectrum of Fertility                            | 3 (3-0-6)      |
| PRDS 706 | Migration and Political and Social Implications                   | 3 (3-0-6)      |

## Dissertation

|          |                       | <b>Credits (lecture-practice)</b> |
|----------|-----------------------|-----------------------------------|
| Plan 1   | PRDS 898 Dissertation | 48 (0-144-0)                      |
| Plan 2.1 | PRDS 699 Dissertation | 36 (0-108-0)                      |

## Course Code Explanation

**The first two letters represent the abbreviated name of the implementing Institute**

PR = Institute for Population and Social Research

**The third and fourth letters represent the abbreviated name of responsible units.**

DS = Programme in Applied Demography and Social Research

PR = Programme in Population and Social Research

**The first three digits (6XX) represent postgraduate programme level.**

## Course Description

## Required Courses

|                 |                                                          | <b>Credits</b> |
|-----------------|----------------------------------------------------------|----------------|
| <b>PRDS 669</b> | <b>Seminar in Applied Demography and Social Research</b> | <b>3</b>       |

Concepts; theories; applied demographic and social research theories; demographic and social science analysing techniques; research methods; data sources; data analysis; contemporary issues in Sustainable Development Goals (SDG), global health; current important issues in population policy; social; economic; health and environment with ethics

|                 |                                             |          |
|-----------------|---------------------------------------------|----------|
| <b>PRDS 684</b> | <b>Advanced Social Research Methodology</b> | <b>3</b> |
|-----------------|---------------------------------------------|----------|

A solid methodological foundation for conducting social science research; all the main steps of empirical research from research design and planning; to field work management; data analysis and result presentation; step-by-step roadmap to the entire research process

|                 |                                          |          |
|-----------------|------------------------------------------|----------|
| <b>PRDS 702</b> | <b>Demographic Materials and Methods</b> | <b>3</b> |
|-----------------|------------------------------------------|----------|

Essential principles to understanding demographic phenomena; advanced methods and measurements for imperfect demographic data; stable population, model stable populations and applications; estimation methods for statistically underdeveloped areas

## Elective Courses

|                 |                          | <b>Credits</b> |
|-----------------|--------------------------|----------------|
| <b>PRDS 664</b> | <b>Family Demography</b> | <b>3</b>       |

Family and household as significant basic demographic units; theory of family changes; social theories of the family; family demography in life course perspective; family formation; childrearing in modern family; divorce and remarriage; family and the elderly; gender, health and the family; social structures and the family; impact of socio-economic and political changes on the family structure and demographic behaviours of the families and multigenerational households; comparative studies on families and households; global householding

|                 |                                 |          |
|-----------------|---------------------------------|----------|
| <b>PRDS 667</b> | <b>Demographic Epidemiology</b> | <b>3</b> |
|-----------------|---------------------------------|----------|

Basic knowledge of demographic epidemiology including measures of morbidity, mortality, and summary measures of population health as known as disability-adjusted life years; principle and methods of health economic evaluation such as cost-effectiveness analysis, cost-utility analysis; cost estimation; mathematical modelling development such as decision tree model, Markov model; results presentation and uncertainty analysis

|                 |                                                                    |          |
|-----------------|--------------------------------------------------------------------|----------|
| <b>PRDS 678</b> | <b>Geographical Information System and Social Science Research</b> | <b>3</b> |
|-----------------|--------------------------------------------------------------------|----------|

Process of data management linking with spatial data (place, location in the forms of point, line and polygon) ; four steps of GIS including collectioning and preprocessing spatial data from various sources; data storage and retrieval organizing data for retrieval; data updating, and editing; data manipulation and analysis performing tasks on data aggregates and disaggregates; estimating parameters and constrain; and performing modeling functions and; the report system displaying; the database in tabular graphic and map form; GIS integrated with social science research

|                 |                                         |          |
|-----------------|-----------------------------------------|----------|
| <b>PRDS 680</b> | <b>Qualitative Research Methodology</b> | <b>3</b> |
|-----------------|-----------------------------------------|----------|

Introducing paradigms in social science research and traditions in qualitative research; qualitative research design; methods of qualitative data collection with special emphasis on in-depth interviews; focus group discussions and participant observations; management and analysis of the qualitative data; using hands-on exercise in doing qualitative research within the scope and interest of the program

**PRDS 686      Mortality and Morbidity      3**

Mortality theories and demographic transition; compression of morbidity; healthy age life expectancy; emerging epidemics, morbidity, and mortality; determinants and social consequences; data sources and completeness of reporting death; estimate of child mortality, estimate of adult mortality, survival function and analysis

**PRDS 689      Economic Demography      3**

Economic theories and perspectives on demographic behaviors and issues, aging, marriage, fertility, migration, health and mortality; economic causes and consequences of demographic changes including population aging on economic growth, income security, pension systems, intergenerational transfers, health care systems; economic concepts to critique and develop policies in response to demographic change

**PRDS 690      Population and Social Determinants of Health      3**

This course will explore issues related to behavioral, psychological, and structural factors that contribute to understanding population health and health inequities. It will also examine social, economic, and political factors that contribute to health inequity. Conceptual frameworks and methodological issues key to measuring, monitoring and addressing health disparities at multiple levels of influence will be discussed. There will be opportunities to learn about the latest developments and innovative ways to reduce health disparities.

**PRDS 691      Business Demography      3**

The importance of and connections between demographic changes and business conducts; changes in age and sex composition affecting business marketing and human resource management; integrative knowledge of demography, strategic management, marketing strategies enhancing business planning and implementation

**PRDS 693      Applied Multivariate Analysis for Demographic and Social Research      3**

An emphasis on the causal relationship estimation by applying multivariate methodology appropriate for demographic and social research including: an introduction of linear and non-linear models under the process of multiple regression analysis for both continuous and discrete data with essential model assumptions; model building by comparing between constrained and unconstrained models; the application of maximum likelihood estimation using logistic regression analysis techniques for dichotomous, nominal, ordinal and count outcomes; extensions of regression modelling techniques dealing with multilevel data structures such as survival analysis and multi-level analysis; common interdependent multivariate analysis techniques such as principal component analysis and confirmatory factor analysis; and structural equation modelling technique which combines factor analysis and multiple regression analysis.

**PRDS 694      Applied Regression Modeling for Panel Data Analysis      3**

A blend of theory and interesting applications of essential statistic/econometric methods for the panel (longitudinal) data analysis, linear and nonlinear panel regression models of continuous variables, the pooled model, the fixed effects model and the random effects model, and the panel regression models of discrete and limited dependent variables; the binary outcome model

**PRDS 703      Social Theories for Demography      3**

Key concepts in social theories; discourse and power; social structure; gender and power relations; symbolic interaction; interaction at individual and structure level; social exchange; understanding and explaining social phenomenon; bridging the abstract concepts with the real world; social theories in fertility, social theories in mortality; social theory in migration; theories of health and social behavior; theoretical applications and research ethics; public policy and governance – theory and practice

**PRDS 704      Global Population Aging in the Twenty-First Century      3**

The global trends of population aging in 21st century; demographic determinants of population aging, theories of aging; an interdisciplinary approach for the research on aging; gerontology in cross-cultural perspectives; factors influencing health and health care, economics, social aspects of population ageing; causes and consequences of population ageing; challenges in responding to population ageing; policy aspects of population aging in countries

**PRDS 705      Sociodemographic Spectrum of Fertility      3**

Concepts of fertility and important measures of fertility; fertility theories, and hypothesis related to the fertility transition; proximate determinants of fertility; social structure and fertility; cultural perspective on fertility; the economics framework of fertility; determinants and consequences of the fertility change; factors affecting the fertility level; socioeconomic development, women's role and fertility; emerging issues in fertility both in developed and developing countries; infertility

**PRDS 706      Migration and Political and Social Implications      3**

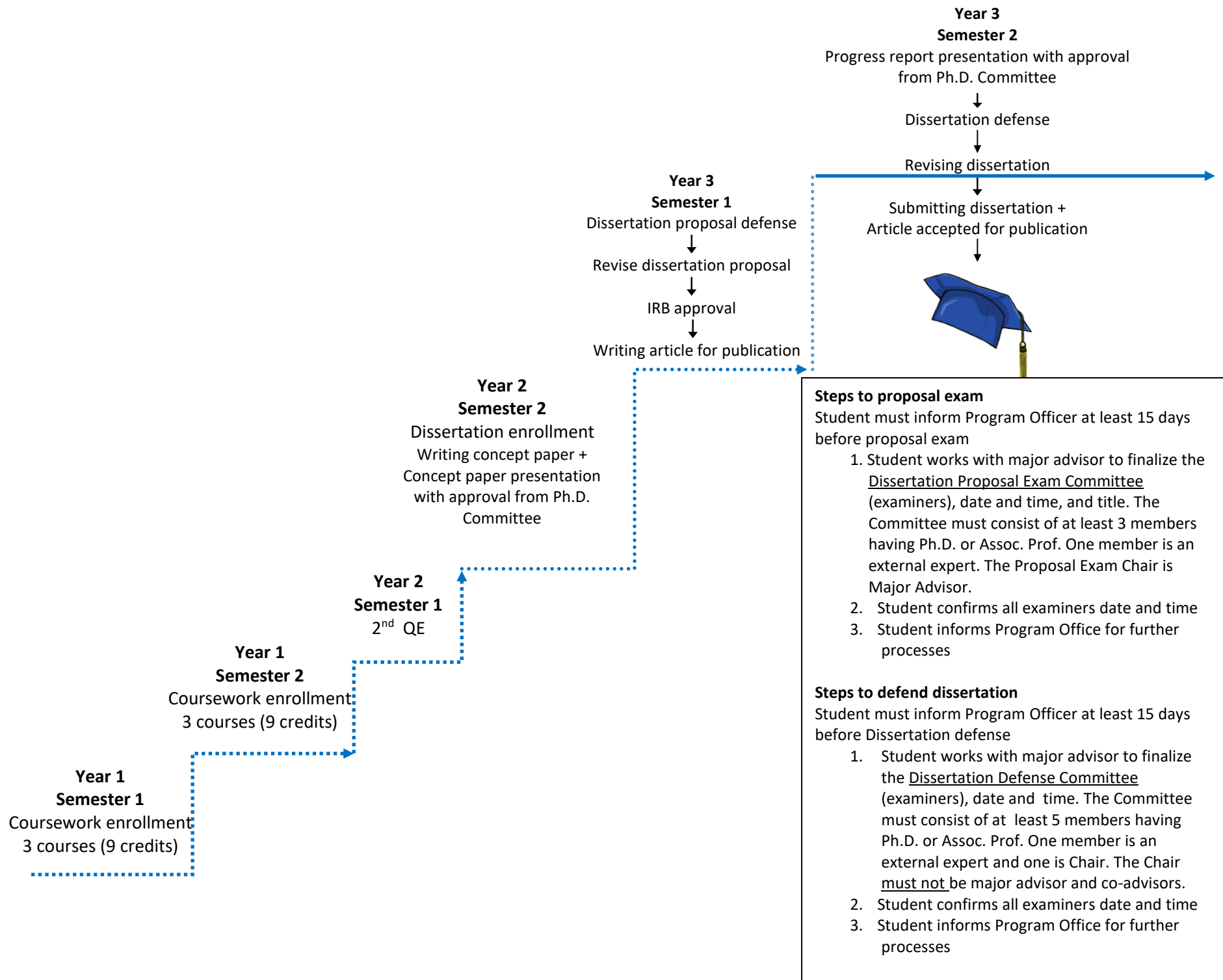
Migration theories, patterns and trends, the analysis of determinants and consequences of different types of migration, policies affecting the population mobility, migration policies in Southeast Asian countries, migration and political consequences, integration issues and policies, multiculturalism society, the relationship of various ethnic groups and their power relations in the society, migration and economic implication implications and development issues, and migration and social environmental implications

**PRDS 898      Dissertation      48**

**PRDS 699      Dissertation      36**

Identifying research proposals and research designs; research frameworks presentations; conducting research concerning of research ethics; data selection; data analysis; synthesizing and reviewing research findings; developing dissertations from research findings; dissertations presentations; writing research findings for dissemination; research dissemination in international peer-reviewed journals; ethics in research dissemination





## Qualifying Examination Procedures

### Condition

Before enrolling for Qualifying Examination, the Students have to finish all require courses for student who selected coursework and research.

For plan research only, student can enroll Qualifying Examination in the first semester

### Timetable

The timetable of QE is set as 3 times a year, starting in September, January, and May during the third week of that month.

### Subject areas

**Written examination:** Subject areas are divided into two main groups as follows:

1. Demography and Technique: This is a four-hour closed-book and computer-based examination. The examination assesses overall knowledge about demography.
2. Research methodology and statistics : This is a four-hour closed-book and computer-based examination. The examination assesses overall knowledge about research methodology and statistics.

**Student will take the oral examination after passed the written examination.**

### Oral examination:

The oral examination, students are required to present their concept note to Ph.D. committee as the exam committee. The committee can ask and guide students to achieve their dissertation.

- Students allow to take oral examination Approximately 1 month after passed 2 areas
- Students have to prepare the concept note that contain sufficient concept and techniques with 2,500-3,000 words.
- Students have to submit the concept note to the officer 1 week before the oral examination.

### Subject area selection

The student can either select only one subject or two subjects at a time. Examinations of Subject 1 and 2 would be scheduled on separate days. Subject 1 examination would be held first. Subject 2 examination would be held in the next two days after Subject 1 examination.

## **Guidelines: Concept paper**

### **Objective**

The purpose of the concept paper presentation is to support students at the beginning of their dissertation topic development.

### **Instruction**

The concept paper should be concise and comprehensive. The students should demonstrate their knowledge and understanding of the topic, and be able to point out reasons why they need to do such research (research rationale). The students will present a literature review that provides evidence of why the topic is important and places their study in context of previous studies, an overview of concepts and theories that are related to their study topic, as well as tentative research questions and objectives. Students may also present a first draft of their conceptual framework.

The students will prepare a concept paper at least 10-15 pages, excluding references and appendix. The students will send their concept paper to the Ph.D. program committees at least 10 days before presenting it in the IPSR Wednesday- In-house Seminar. If students cannot submit the concept paper on time, the presentation date must be postponed.

The student will be permitted to present the concept paper only after completing the qualifying examination. The student must reserve a presentation date in the IPSR Wednesday- In-house Seminar (12:30-1:30 pm.). In the case that the students cannot book the seminar's date, but need to present their concept paper, please inform necessary reasons to the Ph.D. program committees via the Program officer.

The Ph.D. program committees will provide comments and recommendations. The concept paper will be adjusted and developed to be a dissertation topic. However, if the Ph.D. program committees are not satisfied with the concept paper, they can ask the student to present the concept paper again.

In addition, if students change their research topic, the students will be required to present a new concept paper.

## **Guidelines: Progress report**

### **Objective**

The objective of the progress report presentation is to assist students in the work on their dissertation and ensure that students will pass the dissertation's defense.

### **Instruction**

The students will present their work by focusing on data analysis, findings and the discussion of their findings. The content of the progress report should be separated into two parts. The first part (25% of progress report) consists of the research rationale, related concepts and theories, research questions, conceptual framework and research methodology. The second part (75% of the progress report) should emphasize the results of the data analysis, the interpretation of major findings, as well as the discussion and conclusion according to the dissertation's objectives.

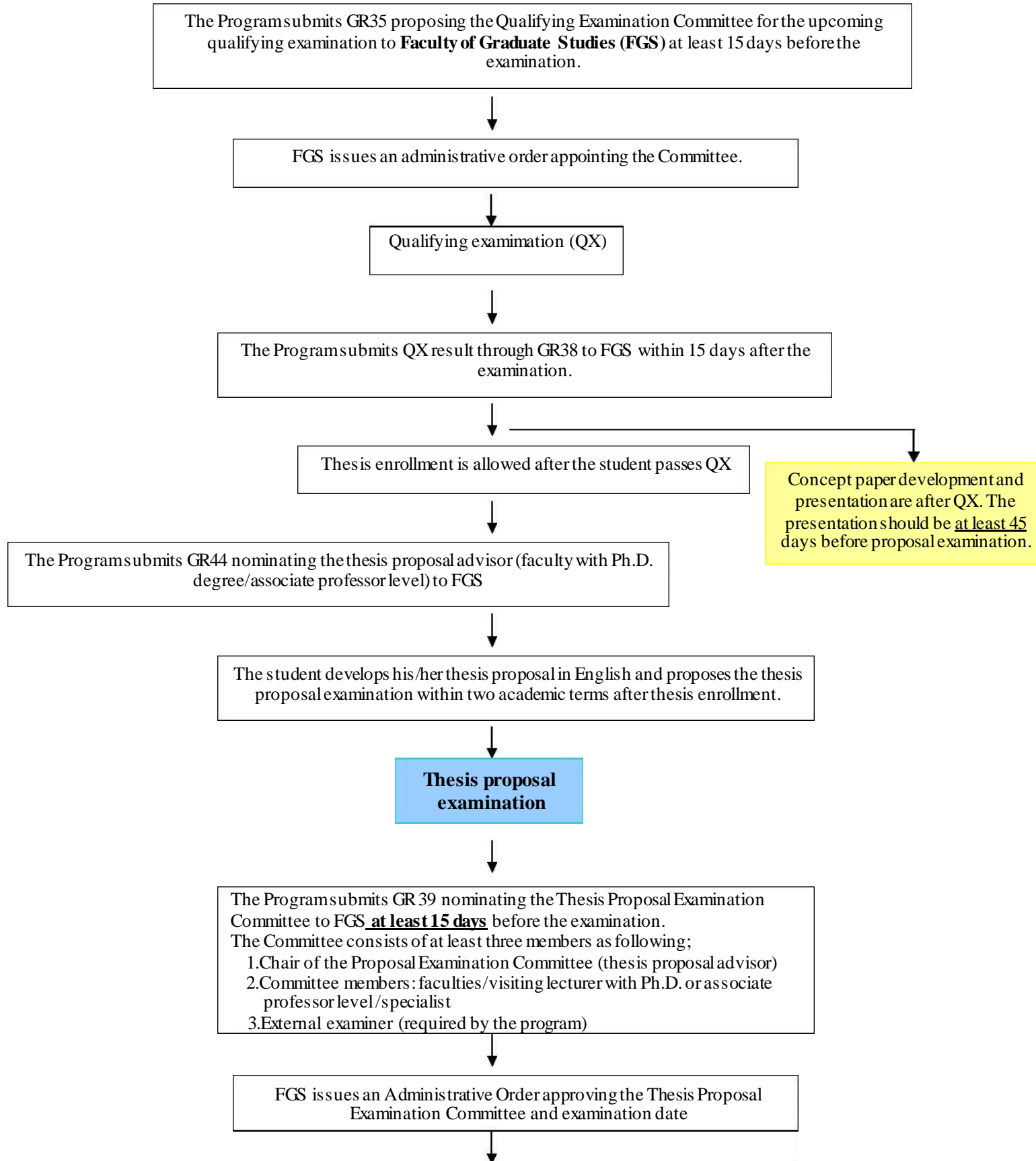
The students will prepare a progress report of at least 20-25 pages, excluding references and appendix. The students will send their progress report to the Ph.D. program committees at least 15 days before presenting it in the IPSR Wednesday- In-house Seminar. If students cannot submit the progress report on time, the presentation date must be postponed.

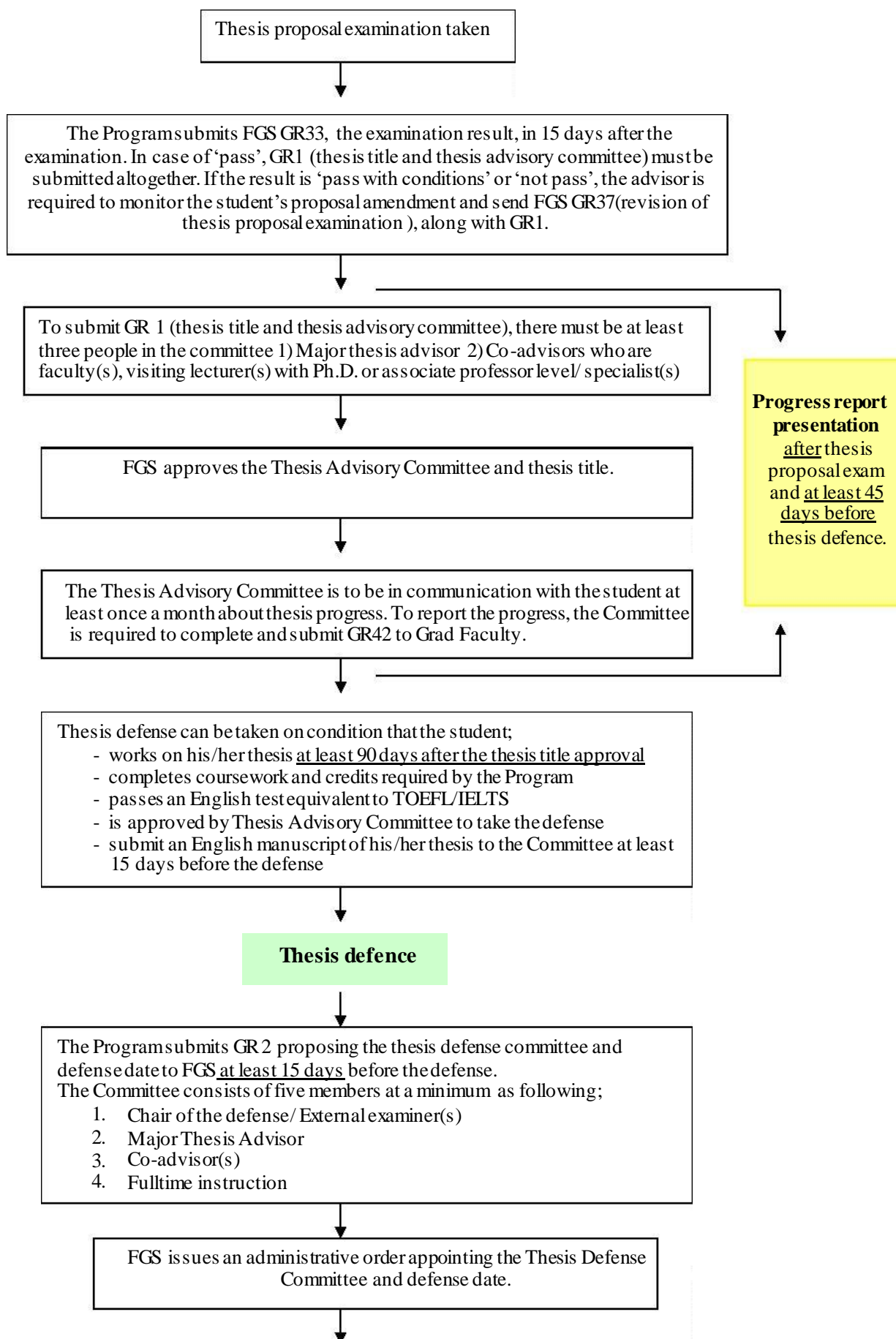
The student must reserve a presentation date in the IPSR Wednesday- In-house Seminar (12:30-1:30 pm.). In the case that the students cannot book the seminar's date, but need to present their progress report, please inform necessary reasons to the Ph.D. program committees via the Program officer.

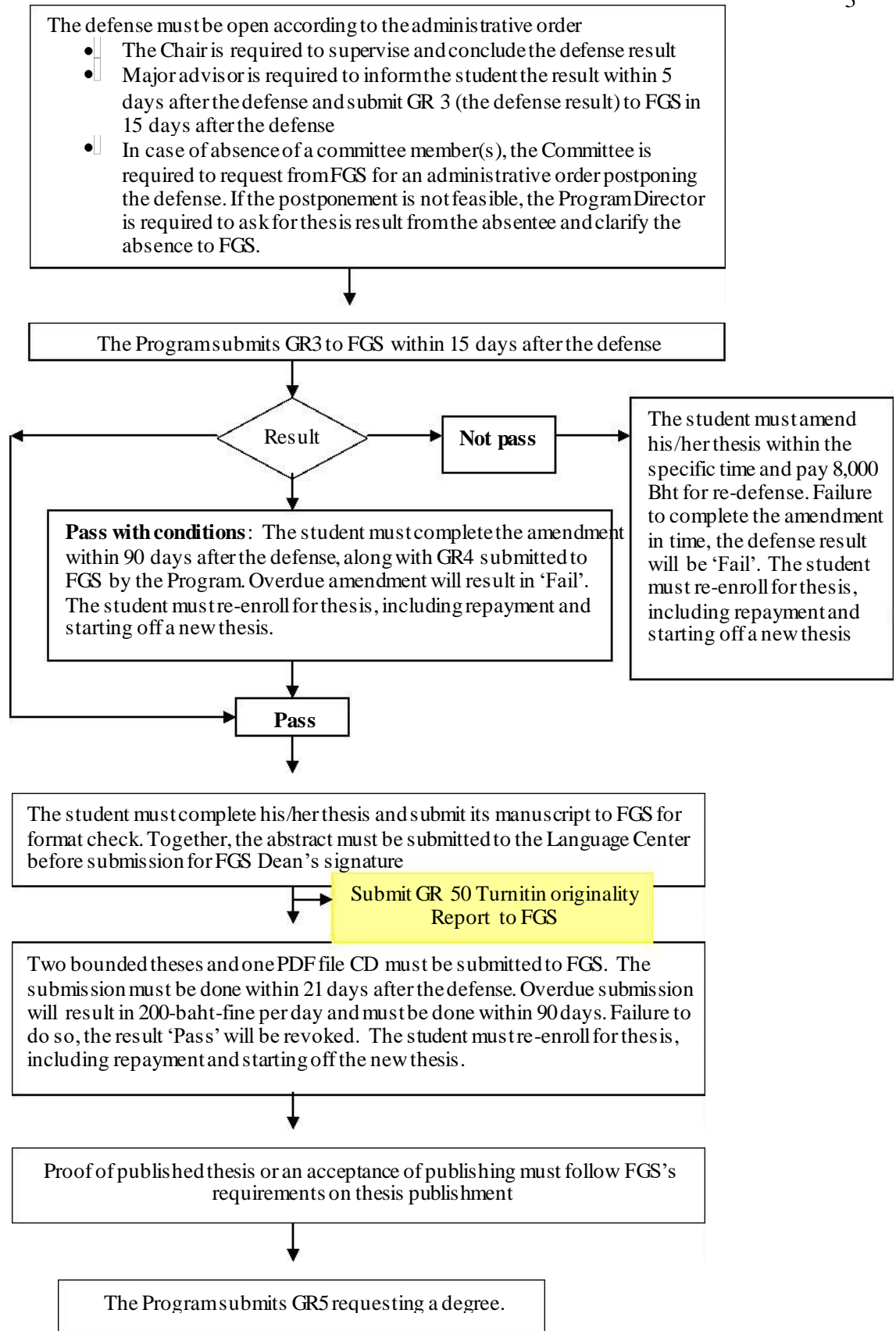
The Ph.D. program committees do not limit the number of the progress report presentations to only one time. In order to receive as many as comments or suggestions, the students can present their dissertation progress more than one time. However, the students can be requested to present their progress report again, if they did not indicate any progress towards answering their research questions.

The Ph.D. committee will provide opinions and recommendations for each progress report presentation. The students will correct and improve their dissertation before the defense.

## Ph.D. Thesis Process







**Student's Activity Progress**  
**for Ph.D. students**  
**(International Programme in Demography &**  
**Applied Demography and Social Research)**

**Objective**


To follow up with students (including those who submitted their dissertation, but did not get a publication) in every four months (three times/year)

The Ph.D. programme committees consider the dissertation progress for our students, therefore, we would like to approach the Ph.D. students to participate the Student's Activity Progress to finish their dissertation on time.

This is the schedule of progress report please see below:

| 1 <sup>st</sup> report  | 2 <sup>nd</sup> report | 3 <sup>rd</sup> report |
|-------------------------|------------------------|------------------------|
| Friday 17 November 2023 | Friday 15 March 2024   | Friday 19 July 2024    |



 Tel. +66 2 4410201 ext. 303  
Fax. +66 2 4419333  
Orrawan Kumdee, Program Officer,

 Email: [orrawan.kum@mahidol.ac.th](mailto:orrawan.kum@mahidol.ac.th)



Ph.D. Program in Applied Demography and Social Research  
Institute for Population and Social Research, Mahidol University  
Salaya Phutthamonthon Nakhon Pathom, 73170 THAILAND

 [IPSRMahidolUniversity](https://www.facebook.com/IPSRMahidolUniversity)

 [@IPSR\\_MU](https://twitter.com/IPSR_MU)

 [www.ipsr.mahidol.ac.th](http://www.ipsr.mahidol.ac.th)